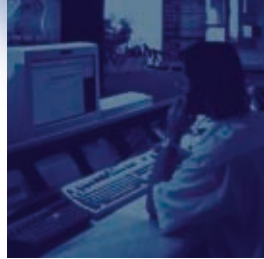
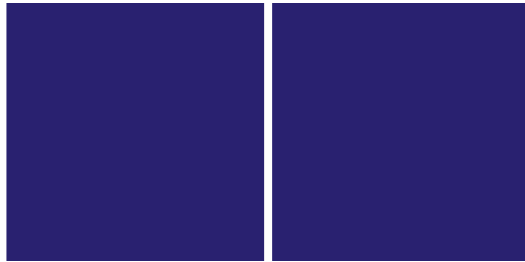


**PROTECTING CRITICAL  
INFRASTRUCTURES**







## Covering all aspects of security, from physical to IT

Nothing is as important as your critical infrastructures. Thales Security Systems recognises this and uses its extensive skills and experience to provide the ultimate protection.

A core company of the Thales Group, Thales Security Systems specializes in the protection of sensitive infrastructures, using sophisticated technology to ensure

the security of people, facilities and IT systems.

As a leader in security for both military and civil markets, Thales is instrumental in making the world safe for governments, businesses and people on every continent. Thales offers end-to-end solutions

for everything from data to environment, in both military and civil areas, and adapted to the security needs of its customers. Each area is backed by decades of experience as consultants, technology developers, system integrators and service providers in the defence, aerospace and IT sectors.

The solutions provided by Thales Security Systems are part of Thales SHIELD™, a comprehensive range of products and systems that includes tools, software programmes and security services.

The Thales Group employs 63,000 people worldwide and in 2003 generated 10.6 billion euros in revenue.



## Covering all aspects of technology to serve our customers better

Thales' employees are all in uncompromising pursuit of the same mission: to listen to our customers, understand their needs, and meet their requirements by providing technologically and financially adapted solutions.

Thanks to its in-depth knowledge of every aspect of security systems, Thales is able to supply its customers with efficient,

reliable, durable solutions. The company's comprehensive offering ranges from security consulting services, architecture definition, complex systems integration, and complete turnkey solutions to the design, implementation, maintenance and administration of security systems. Thales' expertise rests on its mastery of reliable

technologies and its continual pursuit of innovative solutions.

Thales' experts are experienced in all the essential security techniques, including public key infrastructures (PKIs), chip cards, paperless security applications, risk management, biometrics (fingerprint and facial recognition), holograms and intelligent image analysis, as well as tracking and positioning systems.

Another key area of expertise involves the development of risk management and monitoring systems, and Thales' biochemical experts also engineer nuclear, radiological, biological, and chemical (NRBC) agent detector systems.

# Thales applies unmatched expertise in key areas



**In cyberspace** **Protecting data and networks.** Ensuring IT security has become a strategic requirement. Thales manages the entire security for enterprise IT systems, from risk analysis and vulnerability testing through to system recovery. Thales' comprehensive services approach also includes technology solution integration and security services management.

**In public and private places** **Access control and supervision.** Thales designs and installs integrated solutions for the security and surveillance of critical infrastructures and public spaces throughout the world. Solutions include early incident and intrusion detection, video surveillance, access control and supervision, and tracking and positioning. These tailored systems integrate chip cards, biometrics and intelligent image analysis.

**Individuals** **Assuring security for citizens.** Identification solutions include smart documents and cards, biometric technology and authentication control systems. Thales' turnkey solutions provide everything necessary for total identification security – from nationwide project management systems to logistics and maintenance support. Thales also offers tailored solutions for e-government to keep online services for citizens both safe and confidential.

**In the environment** **Detecting and preventing the risks.** In the new geopolitical context, Thales helps governments prevent technological and terrorist threats. Thales identifies high-risk zones, develops new systems to detect and identify nuclear, radiological, biological, and chemical (NRBC) risks, and designs and produces mobile bio-laboratories.



identification and authentication

## ■ ■ ■ For Government Programmes

Governments today face security challenges on multiple fronts. Citizen identification controls have become tighter, and border protection is paramount in an era of non-traditional threats. Thales provides complete systems and documents that raise security levels to new heights while respecting citizen privacy.

Thales Security Systems offers a refined system of smart card technology and travel documents that helps governments to assure ID security.

High-end network and communications security safeguards sensitive data. The company also exercises its expertise in NRBC technology to detect and identify nuclear, radiological, biological and chemical risks. With decades of experience in all security fields, Thales helps governments to assure the safety and protection of their territories and populations.

border control

site protection



### Secure, Reliable Identification Cards

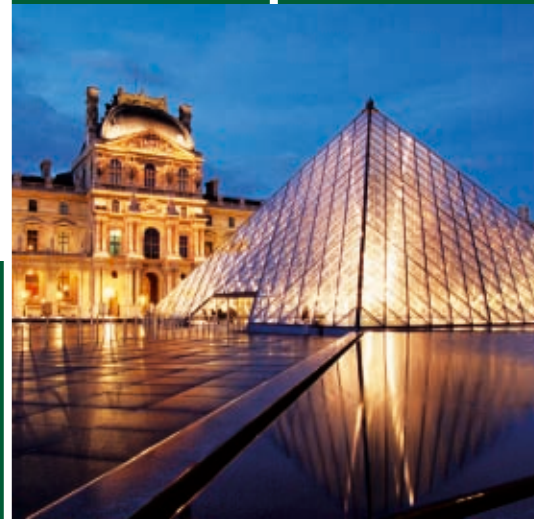
ID systems are basic to the functioning of such crucial national activities as citizen, immigrant and driver registration, tax collection and welfare provision. Thales works closely with governments the world over to ensure that their ID systems are secure, long-lasting and low-cost.

In numerous countries, for example South Africa, Thales has provided driving licence production systems that significantly improved the quality and integrity of the information encoded on the cards. In China, Thales supplied customised, user-friendly national ID production systems to two pilot regions. The company's systems have already produced more than 100 million secure documents worldwide, including "green cards" for the USA, national ID cards for France and passports for the Czech Republic.

network security

video surveillance

access control



## ■ ■ ■ For Corporate and Public Infrastructures

Access control, video surveillance and data security are prime concerns for both private and public enterprises. As infrastructures become more complex, managing these vital systems presents a greater challenge.

Thales draws on decades of experience to ensure that these establishments safeguard their most valuable assets. The company provides end-to-end solutions that streamline all-encompassing security while increasing its effectiveness.

Thales' complete physical and data security solutions assess risks and provide implementation, training and maintenance.

Security technologies range from smart cards and biometrics to intelligent image analysis, which recognises unusual behaviour and alerts operators.

Thales integrates all these elements into turnkey solutions tailored to specific, multiple requirements.

### Integrating Security at the Louvre Museum

The famous Louvre Museum houses 35,000 works of art which are viewed by between five and six million visitors each year – and its viewing area has grown steadily over the last 18 years, resulting in a heterogeneous set of security systems. Thales unified this multi-layered and diverse security labyrinth, rolling out an efficient, single system in early 2003 that enhanced safeguards for staff and visitors. Now all data and history are accessible from a single server, and all subsystems can be controlled via a single graphical interface, simplifying staff tasks. This new security system coordinates field functions, command and control centres and system supervision. Thales also supplies visitor management and announcement software, access badge production and personalisation systems as well as graphical workstations for the museum's seven security control centres.



NRBC risk detection

## ■ ■ ■ For Government Programmes

### A Public Key Infrastructure for Safer Transportation

The European Union has adopted new security regulations relating to driving and rest times for professional truck drivers. The new regulations require the progressive introduction of digital tachographs starting in August 2004.

The French Ministry of Transport is one of the first EU ministries to implement tachographs, and has chosen Thales to develop the system. The new regulations are designed to improve working conditions for professional truck drivers, reduce the risk of accidents and combat fraud.

Thales Security Systems has developed a public key infrastructure (PKI) tachograph which responds to these requirements. The new system will record and store speed and activity data onto personal cryptographic smart cards. This solution will generate more than one million certificates for tachograph manufacturers, transport companies and traffic control forces, and conforms to digital tachography needs for the European Union.

smart card technology

biometrics



### Thwarting NRBC Threats Everywhere

The spectre of non-traditional threats haunts government today, necessitating greater protection of environments and populations. As evidenced in the Tokyo subway attack and the U.S. anthrax incidents, coping with nuclear, radiological, biological and chemical (NRBC) threats demands quick recognition and analysis.

Thales draws on its expertise in defence technology to provide early detection systems for several European governments. Following successful implementation in France and Italy, Finland has now chosen to outfit its military force with a Thales-developed NRBC reconnaissance system. The Finnish army's armoured vehicles use the NRBC system to collect air samples for on-site threat analysis. Thales is also developing mobile biological threat-detection solutions for the French Ministry of Defence's Procurement Agency (DGA). The devices will seek atmospheric anomalies in order to detect any variation. Such in-field analysis allows operators to determine a major threat quickly and monitor its evolution in real-time.





## Guaranteed Protection for Société Générale

Thales has equipped Société Générale's 17 French sites with comprehensive supervision, access control and video surveillance systems to guard the banking giant's staff and premises. Software and equipment – such as fixed, mobile and dome cameras linked to CCTV – detect intrusion, while intranet pre-announcement manages visitors. Access control involves approximately 2,000 ID readers processing 20,000 personnel and about 600 visitors per day. Thales also manages the bank's car parks and provides intercom and building management interface.

The Thales solution for Société Générale analyses security system procedures and data, constantly checking, maintaining and improving its operations. In this way, the bank's employees, visitors and business transactions are constantly under ever-improving protection.



## Managing Vessel Traffic in the Port of London

The Port of London is one of the busiest British ports with over 12,500 commercial vessels per year. To ensure a safer and more efficient port infrastructure, Thales Security Systems is providing the integral radio-

tracking element of the new Vessel Traffic Management System. The Thales Tracs TDMA system provides GPS positional data to the vessels and distributes radar target data from shore-based radars to vessels.

## Singapore Subway: Putting Safety First

The Singapore subway carries more than one million people every day. Thales has been instrumental in providing security since the subway's opening in 1987 when the company installed the first colour CCTV system ever used in this environment. Today the system has over 1,000 cameras installed, ranging from 20 to 40 cameras per station, via which local operators can monitor platforms and halls. The live pictures are transferred via an optical fibre bus, linking all stations to the main control room. Platform images in colour can be transferred directly to driver cabs through a 24 GHz microwave link, allowing the driver to verify that gates and platforms are clear prior to departure, thus assuring passenger safety. Other subway systems that use Thales' analogue and digital technology include Caracas, Taipei, Chicago, Lille, Toulouse and Rennes.

# ■■■ Thales' Top Priority: Our Customers

## Corporate and Public Infrastructures

### *Physical and IT Security Systems for:*

#### **Public Areas**

- The Louvre Museum, Stade de France, Mecca and Medina mosques, Universal Exhibition in Lisbon...
- Air France Cargo, Sodexi, France Handling, Semmaris, Europe Air Poste, MIN of Avignon...

#### **Transport**

- Rail: SNCF, RATP, Eurotunnel...
- Underground trains: Lille, Toulouse, Rennes, Singapore, Taipei, Chicago, Rio, Caracas...
- Road: ASF, ESCOTA, AREA, SANEF, SITER, DDE (A20, Lyon, Rouen, Strasbourg), Prado Carénage Tunnel, Cairo Tunnels, Guangzhou...
- Ports and Airports: London, New York Coast Guard, Unjung Pandang...

#### **Major Companies**

- Banks and Insurance Companies: Société Générale, BNP Paribas, Crédit Agricole, Caisse Nationale des Caisses d'Epargne, Crédit Lyonnais, American Express, Crédit Suisse First Boston, AXA, AGF...
- Industry and Services: Alcatel, Alstom, Altis, Bio-Rad, Canal+, Cegetel, EADS, Ford, Etam, Groupe Snecma, IBM, MSD Laboratory, PSA Peugeot Citroën, Renault, SNPE, Solectron, Thales, Total, Sidor, Sabic...

#### **Sensitive Sites**

- Military Bases: the French Airforce, the Saudi Arabian Airforce, the French Navy, the Royal Saudian Navy, the Singaporian Navy, the Tunisian Ministry of Defence...
- Nuclear Sites: EDF, CEA, Cogema, Kozlodhuy (Bulgaria) ...
- Offshore Platforms, Natural Gas and Oil sites: Total, Shell, Agip, Sonatrach...
- Palaces and Confidential Sites: France, Syria, Saudi Arabia...

#### **Cities**

- General Council of Seine St-Denis, Nice, Paris, Toulouse, Rabat, Casablanca, Tehran, Hanoi, Jakarta...

## Government Programmes

#### **Identification Systems**

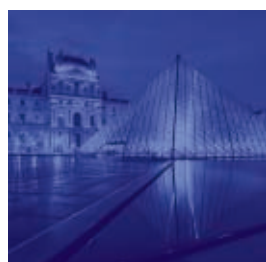
- Cameron, the Czech Republic, China, Colombia, France, Gabon, the Ivory Coast, Kenya, Kosovo, Lebanon, Namibia, Poland, Qatar, Senegal, South Africa, the U.S....

#### **NRBC Detection System**

- The Italian Army, the Finnish Army, the French Army, DGA, the Interior Ministry, the National Gendarmerie, the German Navy...

#### **IT Systems**

- Projects for numerous ministries and government offices: the Transport Ministry, the Finance Ministry, the Defense Ministry, the Health Ministry, Sécurité Sociale, CDC, Customs Headquarters, the National Printers...



## ■ ■ ■ Regional Offices

### **France**

Thales Security Systems (HQ)  
18, avenue du Maréchal Juin  
92362 Meudon-la-Forêt Cedex  
Tel: +33 (0)1 40 83 23 00  
Fax: +33 (0)1 40 83 23 01

### **United Kingdom**

Thales Security Systems UK  
Compass House, Davis Road,  
Chessington, Surrey, KT9 1TB  
Tel: +44 (0)870 601 0000  
Fax: +44 (0)20 8391 1672

### **United Arab Emirates**

Thales Security Systems  
P.O. Box 54339  
Dubai  
Tel: +971 4 299 44 12  
Fax: +971 4 299 41 01

### **China**

Thales Beijing Representative Office  
Unit 1300 - 13/F - Sun Flower Tower N°37  
Maizidian Street - Beijing 100026  
Tel: +86 10 65 00 33 92  
Fax: +86 10 85 27 52 01

